

Coryn's Flower Baskets

Designed by Lisa DeBee Schiller

Featuring Lisa DeBee Schiller's Coryn Collection

SIZE: 45" x 54"



PLEASE NOTE: QUILT IMAGE SHOWN IS A DIGITAL REPRESENTATION, FABRIC LOOK MAY VARY ON YOUR PROJECT.
VISIT OUR *FREE PROJECT* SECTION ONLINE FOR ANY PATTERN UPDATES BEFORE STARTING QUILT PROJECT.



WINDHAM FABRICS

Coryn's Flower Baskets

Page 2



41130-2 Soft Plum



41131-1 Soft Teal



41131-4 Taupe



41132-1 Soft Teal



41132-3 Cream



41132-5 Dark Taupe



41133-3 Cream



41134-2 Soft Plum



41134-3 Cream



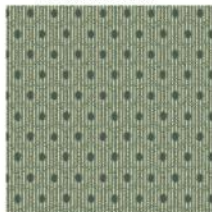
41134-4 Taupe



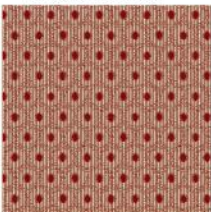
41134-6 Cranberry



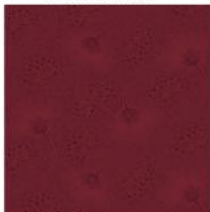
41135-2 Soft Plum



41136-Soft teal



41136-6 Cranberry



32036-2 Burgundy



32032-6 Dark Pink



32034-6 Dark Pink



32032-10 Teal



32036-13 Tan



32036-18 White

Fabric Requirements:

1/2 yard 41135-2 Soft Plum

1/2 yard 32036-18 White (Mary's Blenders)

5/8 yard 41130-2 Soft Plum

1/2 yard 41134-4 Taupe

Fat 1/8th each:

41134-2 Soft Plum, 41134-6 Cranberry, 41131-1 Soft Teal

41131-4 Taupe, 41132-1 Soft Teal, 41132-3 Cream

41132-5 Dark Taupe, 41133-3 Cream, 41134-3 Cream

Scraps or Fat 1/8th each:

41136-6 Cranberry, 41136-1 Soft Teal, 32032-10 Teal

32032-6 Dark Pink, 32034-6 Dark Pink, 32036-2 Burgundy

32036-13 Tan

3 1/4 yards for Backing

Coryn's Flower Baskets

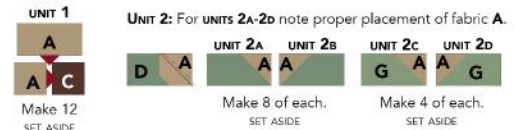
Page 3

Swoon (variation) Block Construction

1. 3 Blocks Required. For each block, cut:

Fabric A (41134-4)	4 – 2½ x 4½” rectangles 20 – 2½ x 2½” squares
Fabric B (32036-18)	1 – 4½ x 4½” squares 1 – 8-1/2” x 8-1/2” square
Fabric C (41134-2)	4 – 2½ x 2½” squares
Fabric D (41132-1 or 41134-4)	8 – 2½ x 4½” rectangles
Fabric E (41132-5 or 41134-4)	8 – 2½ x 4½” rectangles

Main Block Assembly



For UNITS 2E-2H note proper placement of fabrics A and B.



Construct block units (see diagram)

2. Unit One: Sew 1 – 2½ x 2½” square Fabric A to 1 – 2½ x 2½” square Fabric C.
 Note placement of 2½ x 2½” square in unit one construction
 Sew 1 – 2½ x 4½” rectangle Fabric A to above a/b segment.
 Repeat to make 4 of Unit One

Set 1: Sew UNITS 1 and 2 together as shown below, note proper placement of units.
 Make 2 Set 1.



Set 2: Sew UNITS 2 together as shown below, note proper rotation and placement of units.
 Make 2 Set 2.



3. Unit Two is comprised of 4 segments.
 Sew 1 – 2½ x 2½” Fabric A square to end of 2½ x 4½” Fabric D rectangle.

Sew diagonal from corner to center point.
 Fold triangle towards corner. Press. Make 2 segments per block.

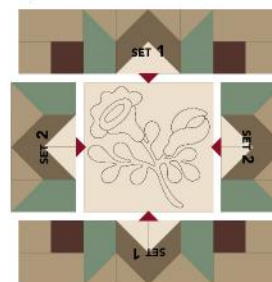
Open up and trim away excess underneath.
 Repeat above stitching diagonal to opposite corner. Make 4 segments per block.

Stitch 1 – 2½ x 2½” Fabric A square to end of 2½ x 4½” rectangle Fabric E.

Stitch 1 – 2½ x 2½” square Fabric B to opposite end of above. Make another segment opposite of above.
 See diagram for fabric placement

Repeat to make 4 of each segment above so you have 4 units, with 2 each block.

Sew Set 2 to sides of Swoon block, next sew Set 1 to top and bottom of Swoon block. See diagram below.



4. Unit 3 Cut 1 – 8½ x 8½” square Fabric B
5. Lay out all units following diagram and stitch together to make Swoon (variation) block. Repeat above to make 3 blocks.

Coryn's Flower Baskets

Page 4

Star Block (2 required)

1. For each star block, cut:

Background: 4 – 2½ x 2½” squares
4 – 2½ x 4½” rectangles
Fabric 1 (center): 1 – 4½ x 4½” square
Fabric 2 (star points): 8 – 2½ x 2½” squares

2. Refer to fabric designation diagram for placement (diagram 1)

3. Stitch together blocks:

Stitch 1 – 2½ x 2½” square diagonally to one end of 2½ x 4½” rectangle background. Trim, turn back corner.

Add another square to opposite end of rectangle and repeat above, stitching diagonally opposite of above.

Repeat to make 4 units for each block (diag. 2)

Sew together in rows.

Row 1: 1 – 2½ x 2½” square background
1 – rectangle unit
1 – 2½ x 2½” square background

Row 2: 1 – rectangle unit
1 – center square
1 – rectangle unit

Row 3: 1 – 2½ x 2½” square background
1 – rectangle unit
1 – 2½ x 2½” square background

4. Stitch rows 1, 2 and 3 together.

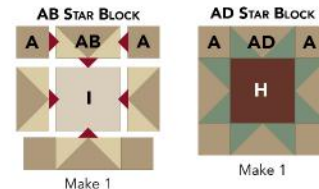
Repeat to make 2 blocks (diag. 3)

Star Unit Assembly

Flying Geese Units: Similar to Unit 2 assembly, make FLYING GEESE UNITS as shown in diagram below.



Star Blocks: Assemble A 2-1/2” squares, I 4-1/2” squares and flying geese units as shown in diagram below.



Star Units: Sew Star block to Swoon block. Make one of each as shown in diagram below.



Quilt Assembly

1. Piece 3 Swoon blocks.
2. Piece 2 Star blocks.
3. Applique nosegay in center of each Swoon block (3 blocks)
4. Applique small nosegay in center of each plain block (2 blocks).
5. Cut 9 sashing strips 1½” wide.
6. Stitch together blocks and sashing. (diagram 1)

Coryn's Flower Baskets

Page 5

- Stitch 1 to sashing.
 - Stitch 5 to 7.
 - Stitch 5/7 to above.
 - Add sashing to above.
 - Add 3 to above.

 - Stitch 4 to sashing.
 - Stitch 2 to above.
 - Stitch sashing to above.
 - Stitch 5 to 6
 - Stitch 5/6 to above
7. Stitch block strip 1/5/7/3 to vertical center sashing strip
Stitch block strip 4/2/5/6 to opposite side of vertical sashing strip
Add side strips and then top and bottom strips (See diagram 2)
8. Cut side borders:
2 – 5½ x 44½” sides
2 – 5½ x 45½” top and bottom.
Note: You'll have to piece side borders. Before cutting, re-measure and make adjustments.
9. Sew body of quilt. (See diagram 3)
10. Sandwich, quilt and bind.

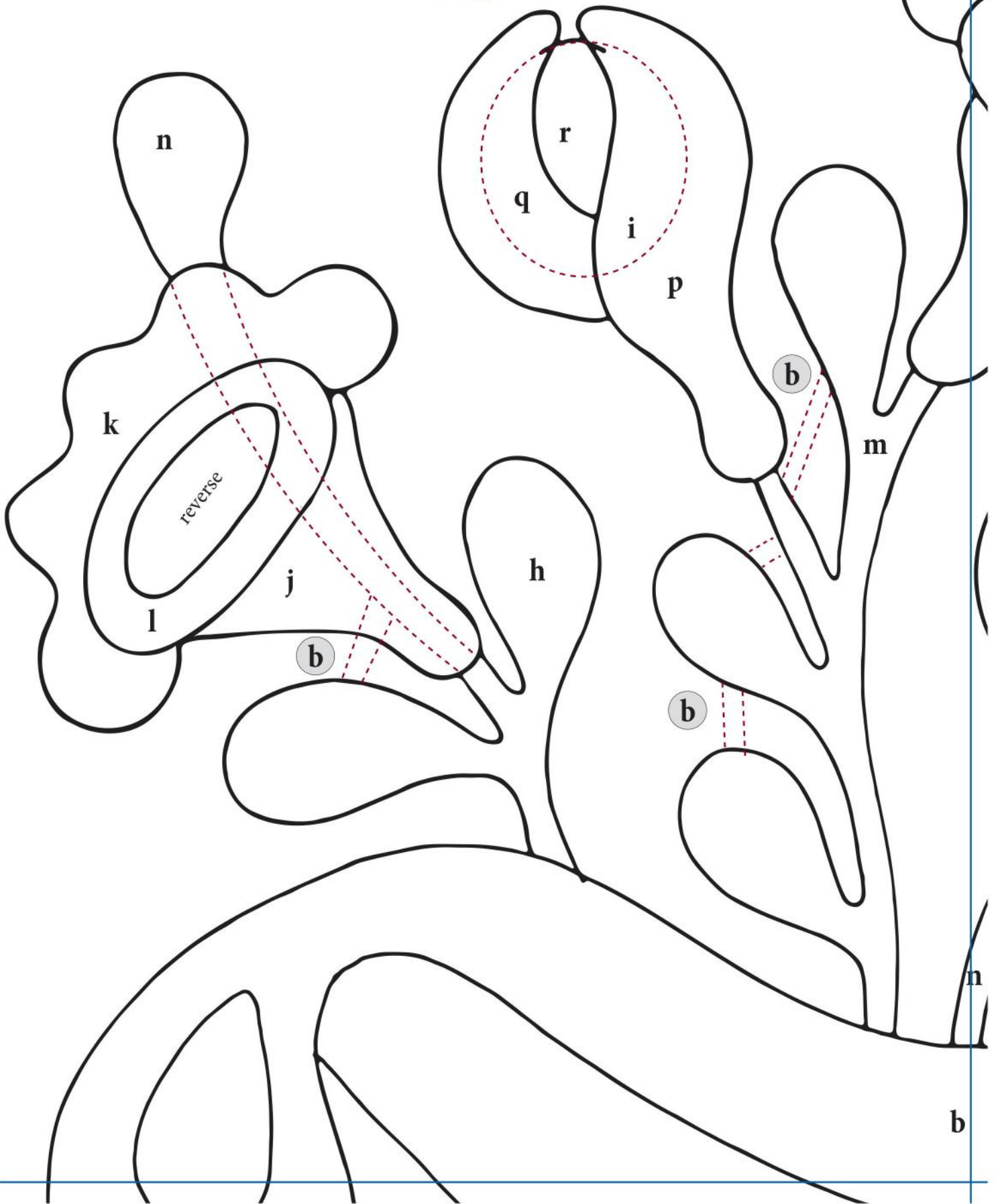
Please refer to final quilt assembly diagram



Coryn's Flower Baskets

Unit 1

Page 6



Coryn's Flower Baskets

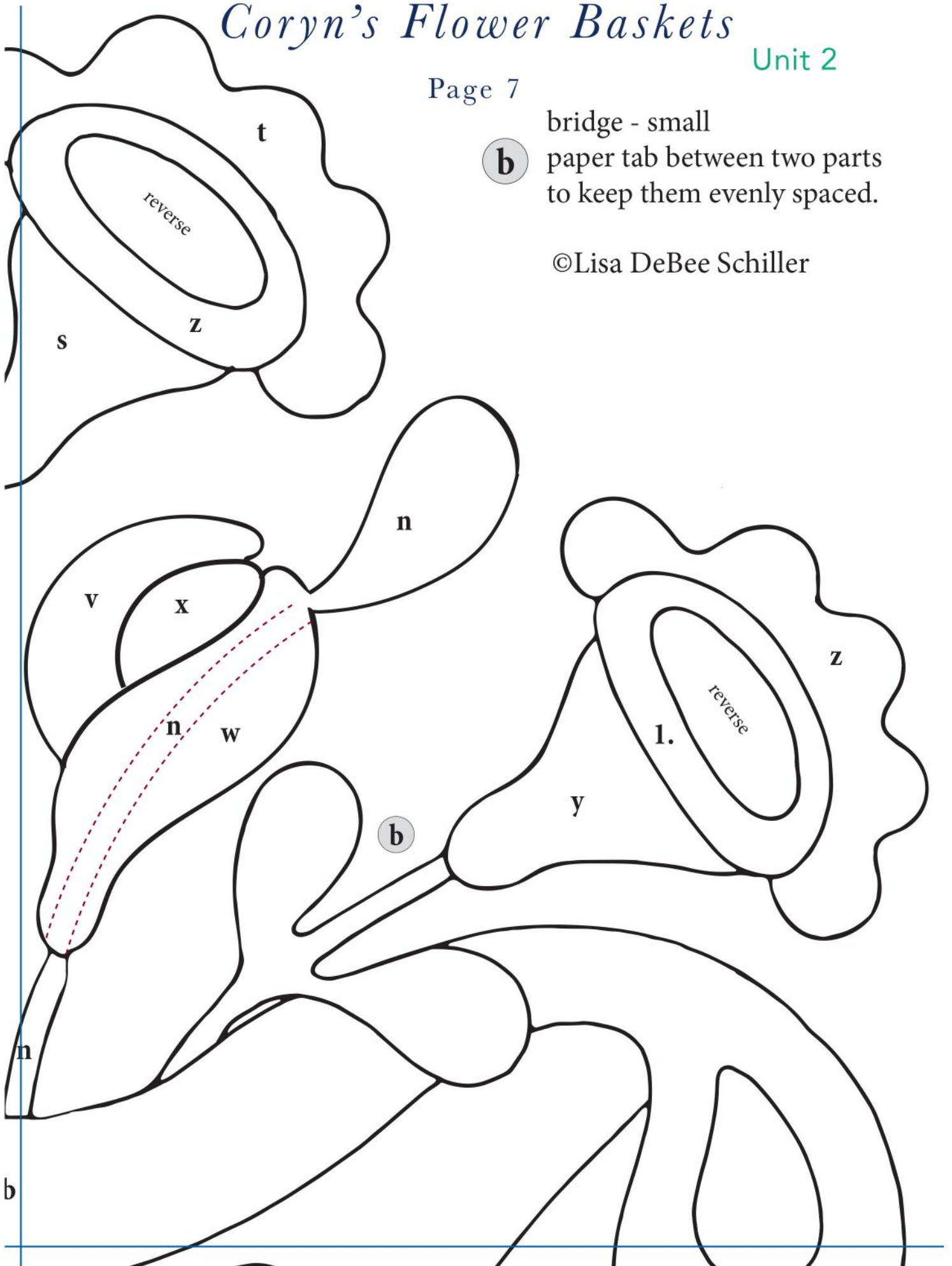
Unit 2

Page 7

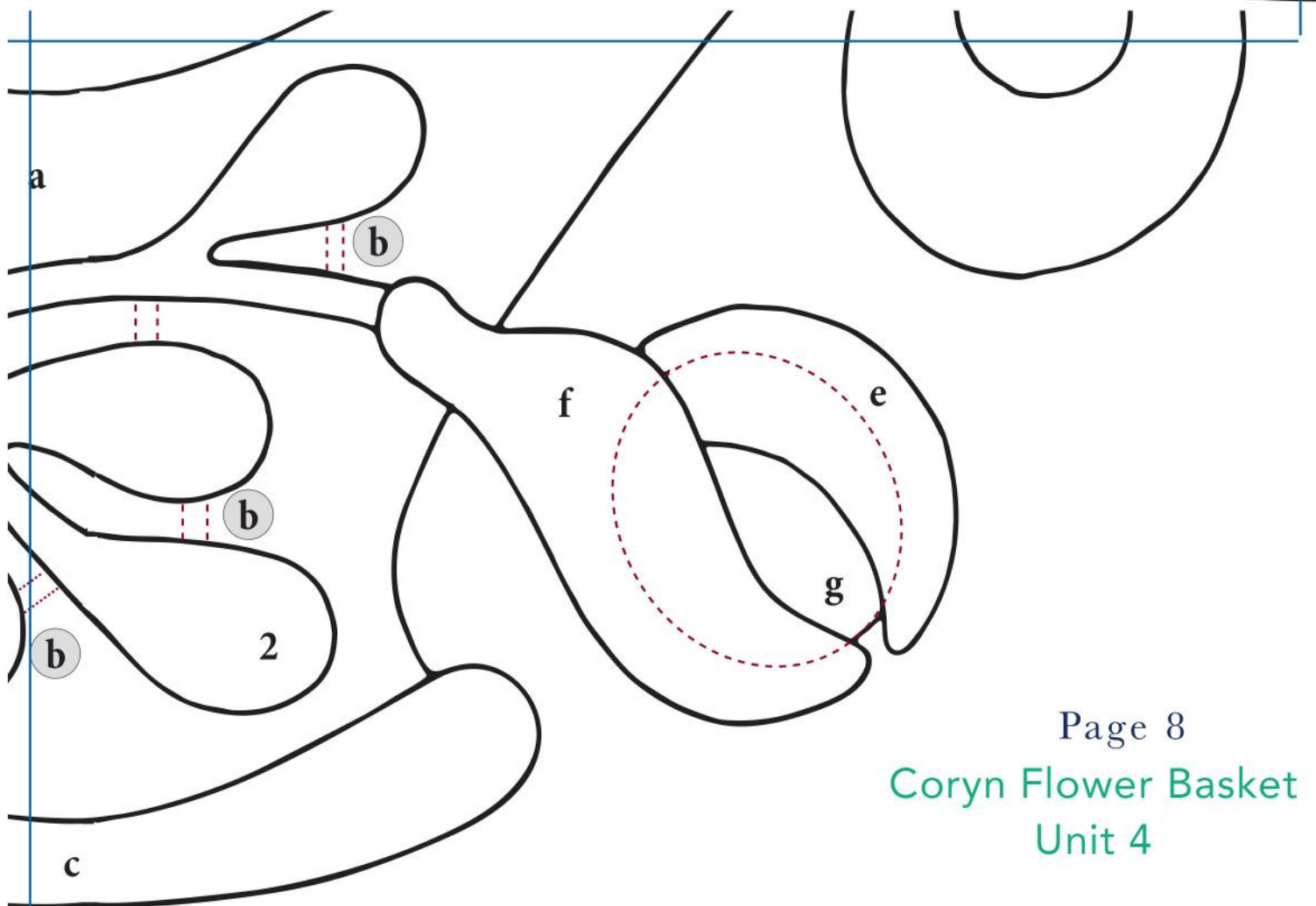
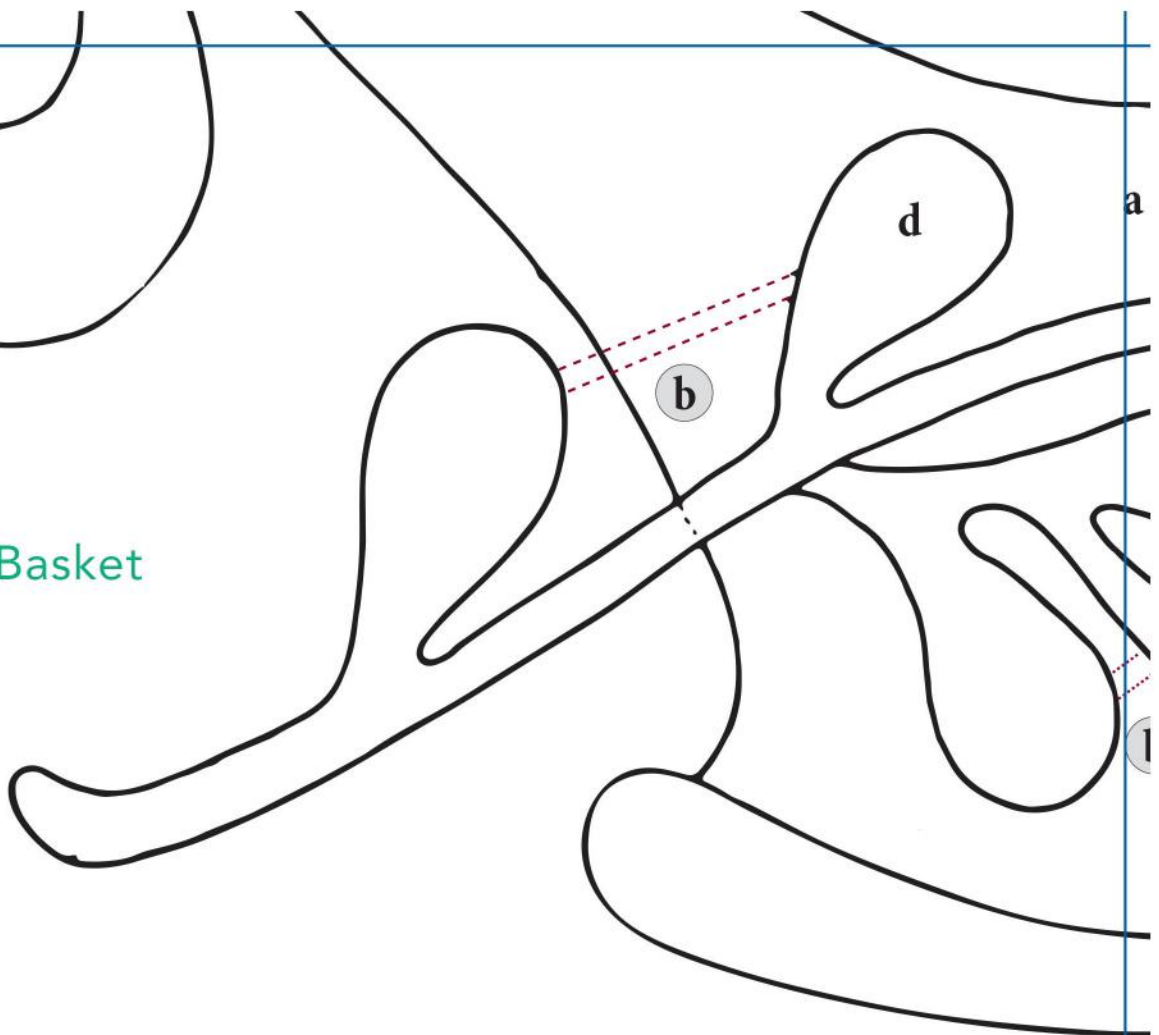
bridge - small

b paper tab between two parts to keep them evenly spaced.

©Lisa DeBee Schiller



Coryn Flower Basket
Unit 3

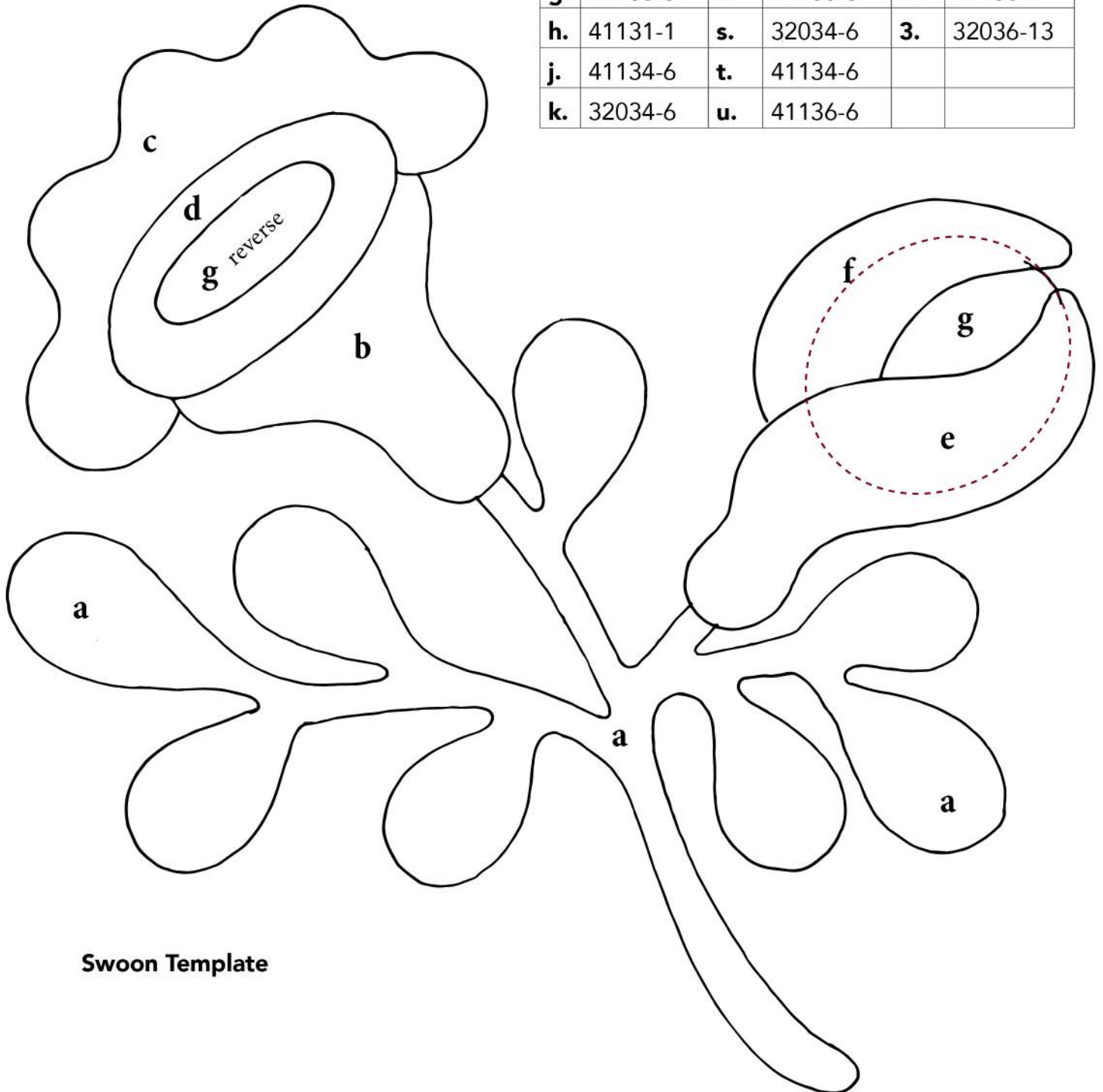


Swoon Template Fabric Chart

a.	41131-1 41132-1	e.	41134-6
b.	32033-6	f.	32032-13
c.	41134-6	g.	32036-13
d.	41136-6		

Flower Basket Template Fabric Chart

a.	41130-2	l.	41132-2	v.	32032-6
b.	41135-2	m.	32032-10	w.	41134-6
c.	41134-2	n.	41131-1	x.	41133-4
d.	41136-6	o.	41132-1	y.	41134-6
e.	41134-6	p.	32032-6	z.	32034-6
f.	32034-6	q.	32032-2	1.	41134-2
g.	41133-3	r.	41133-3	2.	41136-1
h.	41131-1	s.	32034-6	3.	32036-13
j.	41134-6	t.	41134-6		
k.	32034-6	u.	41136-6		



Swoon Template

Coryn's Flower Baskets

Page 10

Unit 1

Unit 2

b bridge - small paper tab between two parts to keep them evenly spaced.

©Lisa DeBee Schiller

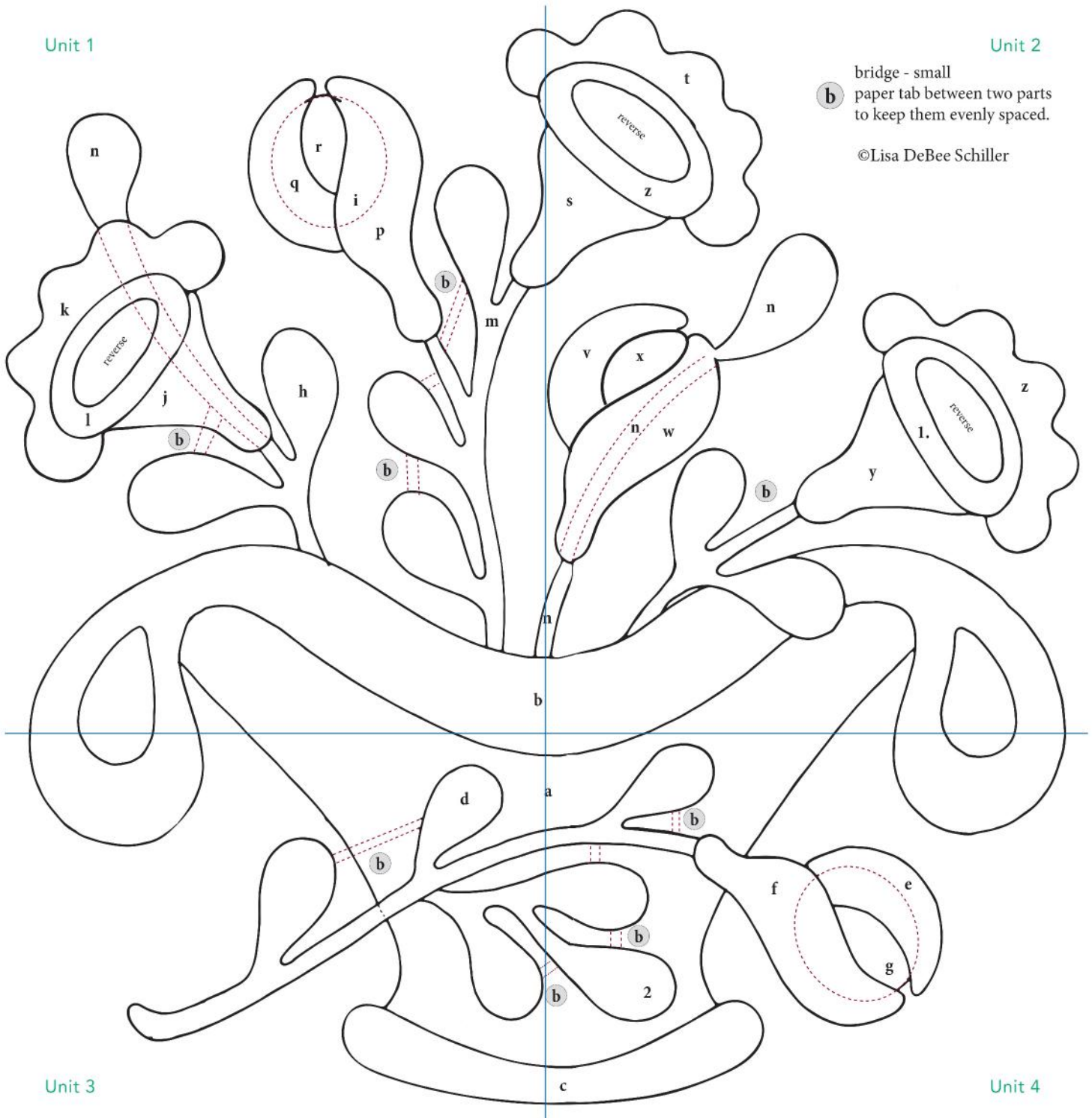


IMAGE IS SCALED DOWN 50% FROM ORIGINAL SIZE